

osc

Outdoor Sport Courts

APEX COURT TILE

Design your court. See the price. Order it.

Premium interlocking sport-court tiles — designed online, shipped factory-direct.



LIVE PRICING
from \$49/m²

10-year
warranty

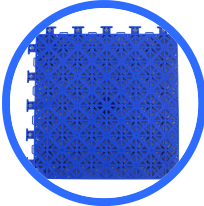
Factory-direct
no reseller, no markup

All-weather
UV-stable, anti-slip

AU + 40 countries
door-to-door delivery

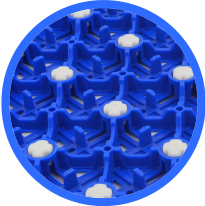
A SERIOUS TILE, UP CLOSE

Every Outdoor Sport Courts court is built from the same precision-moulded interlocking tile — engineered for pro-level play and made to take years of full-sun, all-weather Australian backyards.



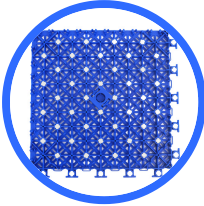
Anti-slip textured surface

A suspended, textured top with lateral forgiveness for joints — confident grip for stops, starts and steering, even in the wet.



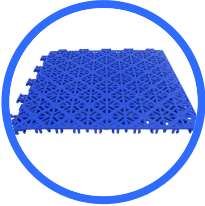
Built-in silicon cushioning

Silicon cushions under the surface absorb impact — pro ball-bounce with 93% rebound, softer on knees and joints than concrete.



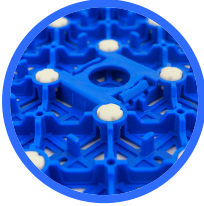
Free-draining open base

The elevated lattice lets water run straight through — no puddles, playable again minutes after rain.



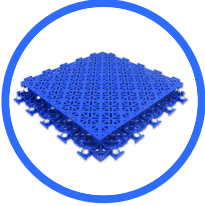
Tool-free interlock

Tiles snap together by hand — no glue, no setting time. Bevelled edges and corners clip on the same way.



Anchored & theft-proof

A hidden centre cap on every tile reveals an anchor point. The included anchors lock your court down — no sideways shift, no lifting.



All-weather, low maintenance

UV-stable pigments, frost and heat tolerant, naturally hygienic. Care is a sweep, blow or pressure-wash.

93% BALL REBOUND	304.8mm TILE MODULE · 1 FT ²	10 yrs TILE WARRANTY	0 GLUE · TRADES · WAITING
----------------------------	---	--------------------------------	-------------------------------------

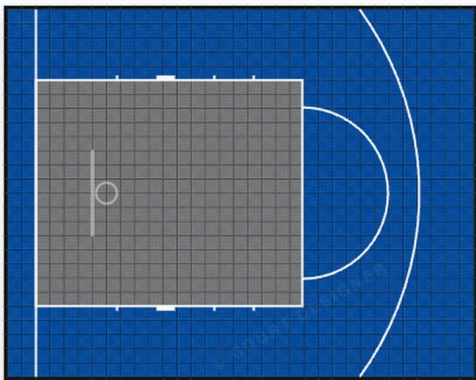
Design it yourself — in 2D, 3D & AR. Watch the price as you build.

No quotes to chase, no salesperson. Pick your sport, size, colours, line markings and logos in the online designer — the exact price updates live, freight to your postcode included. Stand your court in your own backyard at true size with AR before you spend a cent.

1

Design it online

Any sport, any size — built tile-by-tile so nothing is locked to set dimensions. From \$49/m².



"The Splash Zone" — 3-point half court, the most-requested backyard size

2

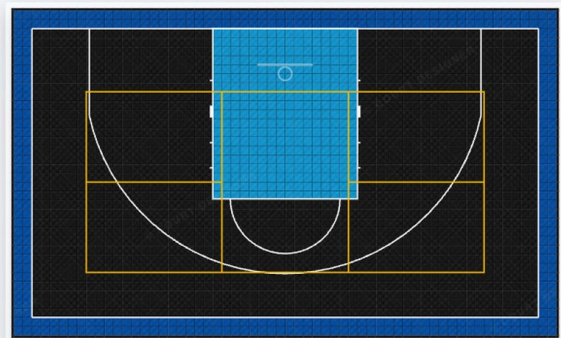
We custom-build it

Made to order at the factory with your colours and line markings applied in production — not painted on later.

3

Snap it together

Arrives flat-packed with edges, anchors and a step-by-step guide. Most home courts go down in a weekend.



"The Triple Threat" — basketball, pickleball & net games on one court

Want a head start? Nine proven sizes — five basketball, two pickleball, two multi-sport — are ready to customise at [outdoorsportcourts.com/shop](https://www.outdoorsportcourts.com/shop), each with live pricing and instant colour swaps.

COLOURS & SPECIFICATIONS

Eleven UV-stable tile colours — mix any of them across court, key, run-off and edging. Line markings in white or any palette colour, applied at the factory into the tile.



Pine



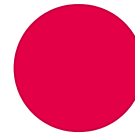
Fern



Solar



Lava



Crimson



Plum



Indigo



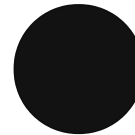
Lagoon



Stone



Slate



Obsidian



White · lines

Tile module	304.8 mm × 304.8 mm (exactly 1 ft ²) — every court is whole tiles, no cutting
Material	High-impact modular polypropylene, engineered for sport
Surface	Anti-slip textured top with lateral forgiveness for joints
Cushioning	Built-in silicon cushions — 93% ball rebound, shock absorption, softer on joints than concrete
Drainage	Free-draining open base — no puddles, dries fast after rain
Weather	UV-stable pigments + frost/heat tolerant — outdoors all year
Line markings	Pre-applied at the factory into the tile — far tougher than painted-on lines
Install	Snap-together interlock + bevelled edges — no glue, no setting time
Anchoring	Hidden centre-cap anchor points + included anchors — no shift, theft-resistant
Warranty	10 years on every court (tiles, UV/structural)

YOU INSTALL IT IN A WEEKEND

- 1 Prepare a flat, firm base**

Concrete, asphalt or a compacted pad. Existing driveways and older slabs are usually perfect — the tiles bridge hairline cracks.
- 2 Plan your starting corner**

Your design maps to exact whole-tile counts — no cutting. Lay out from a corner so the court sits square.
- 3 Interlock the tiles**

Press each tile onto its neighbour until it clicks. A rubber mallet helps seat them flush. Work row by row to your design sheet.
- 4 Clip on edges & corners**

Bevelled ramps snap around the perimeter for a finished, trip-free edge.
- 5 Anchor it down**

Pop the hidden centre caps and drive the included anchors — the court can't shift and can't be lifted.
- 6 Play — straight away**

No setting, no drying, no waiting. Markings are made into the tiles at the factory.

Pouring a new slab? Aim for ~100 mm thick with steel mesh, levelled within 3-5 mm, a gentle 0.5-1% fall for drainage, and at least 72 hours cure before laying tiles. Size it to your court's design dimensions plus 5-10 mm all round — your design spec sheet has the exact numbers for your concreter.

Care & repairs

Sweep, blow or pressure-wash — that's the whole maintenance routine. If a tile is ever damaged, pop it out and click a replacement in: no specialist, no resurfacing, no court closed for days.

Delivery

Typically 8-10 weeks from order — around 4-5 weeks to custom-build your court, plus about 2 weeks freight. Australia-wide, and factory-direct to 40+ countries.

WHY OUTDOOR SPORT COURTS

You deal directly with the factory.

Your court is made in a world-leading factory that ships sport flooring to more than 40 countries — hundreds of thousands of square metres a year. There's no importer, distributor, showroom or salesperson in the chain. No middleman markup — just a premium court at its real price, designed by you, priced live, and shipped to your door.

[Design yours in minutes → outdoorsportcourts.com](https://www.outdoorsportcourts.com)



Pricing and details current at June 2026 and may change — the designer always shows the live price for your exact court, including delivery to your postcode. Outdoor Sport Courts · Made in Australia · info@outdoorsportcourts.com